

NEWS LETTER

UNLOCK SKILLS  BUILD CAREERS  SHAPE THE FUTURE

Our newsletter brings you the latest updates, opportunities, success stories, and upcoming initiatives—all aimed at helping students, educators, and institutions stay ahead.

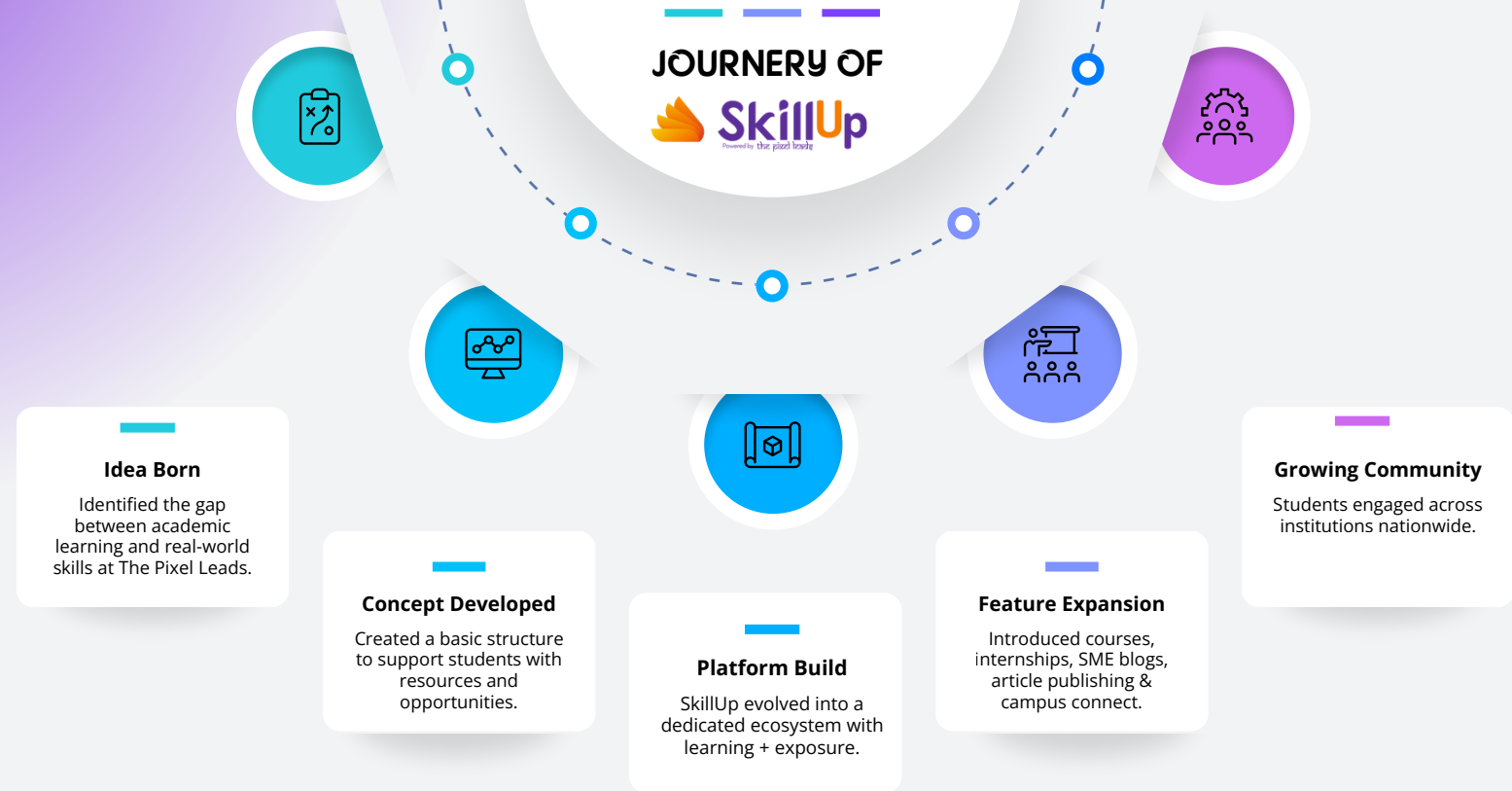
In This EDITION

- New Courses & Learning Paths Launched
- Internship Highlights
- SME Articles Published
- Campus Connect Updates
- Announcements, Events
- SkillUp Spotlight
- Partner Institutions & Collaboration Stories

ABOUT US

SkillUp, an initiative by **The Pixel Leads**, is a next-generation learning and opportunity platform crafted to prepare students for the future. Designed with a strong focus on industry alignment, SkillUp equips learners with the competencies and confidence needed to excel in real-world environments.

At SkillUp, students gain access to a dynamic ecosystem that includes specialized courses, hands-on internships, exclusive SME insights, and a dedicated article publishing hub—all aimed at building a strong digital footprint and career-ready profile. By connecting academic learning with practical exposure, SkillUp empowers students to continuously learn, showcase their expertise, and stand out in a competitive world.



A Vision That Grew Into a Movement

SkillUp began as a simple idea inside The Pixel Leads—born from the belief that students deserve more than traditional classroom learning. While working with institutions and young learners, we noticed a clear gap: students had talent and ambition, but lacked opportunities, guidance, industry exposure, and a platform to showcase their skills.

What started as a small digital initiative soon evolved into a complete ecosystem focused on student development. As demand for practical, impactful learning grew, this idea transformed into SkillUp—a platform designed to help students learn, build, publish, grow, and connect with real opportunities.

Today, SkillUp offers:

- Industry-focused courses
- Internships & real-time projects
- SME insights & mentorship
- Article publishing & digital portfolios
- Campus Connect programs
- Events, workshops, and skill-building activities

Every feature was created to bridge the gap between academics and industry readiness. Over time, SkillUp has become a community, a talent hub, and a gateway for students to stand out in the competitive world.

From its origins at The Pixel Leads to becoming a strong identity of its own, SkillUp continues to grow, innovate, and empower students across campuses.



Empowering Students, Building Futures

Impact

Investing in Tomorrow's Leaders:

Every student we support is a step toward a stronger future. We are building the next generation of engineers, innovators, and leaders who will drive global change.

Join us in celebrating their journey today!

SkillUp Platform Highlights

SkillUp is your all-in-one learning and career acceleration ecosystem designed to empower students, freshers, and working professionals with the right skills, opportunities, and industry exposure. The platform brings together innovation challenges, expert knowledge, interview preparation, campus community engagement, and strategic partnerships — all under one unified system.

With **SkillUp**, learners gain access to practical training, expert-led content, real-world problem-solving events, and meaningful collaborations that strengthen career growth. Each component of the platform is thoughtfully designed to help individuals build confidence, enhance competence, and stay industry-ready.



**The
Strategic
Partnership
Nexus**



**SME
Corner**



**Campus
Connect**



**Interview
Prep**



**DevFusion
Hackathon**





The Future of AI

A general look at where artificial intelligence is heading.



The Strategic Partnership Nexus

The Strategic Partnership Nexus is SkillUp's collaborative bridge that connects educational institutions, industry leaders, and innovation-driven organizations to create meaningful opportunities for learners. This initiative builds a strong ecosystem where students gain access to real-world projects, internships, expert mentorship, and career-enhancing engagements through powerful alliances.

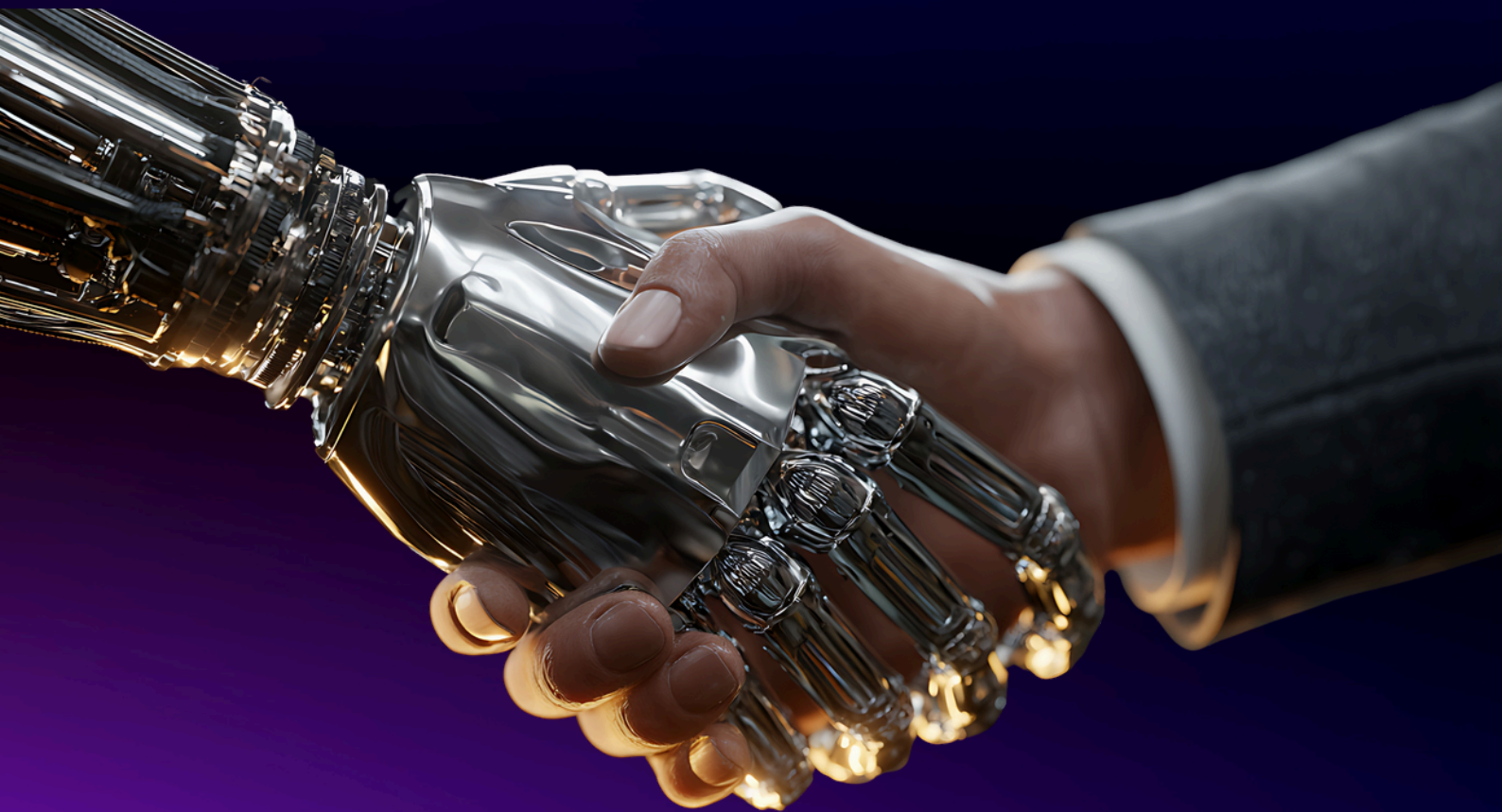
By forming partnerships with companies, startups, training providers, and academic institutions, the Nexus ensures that learners are exposed to industry-relevant skills, practical experiences, and cutting-edge technologies. These collaborations not only strengthen employability but also support institutions in delivering enriched learning experiences.

The Strategic Partnership Nexus empowers SkillUp to create a wider impact—bringing together talent, industry, and innovation under one unified network that drives growth, learning, and future-ready careers.



SHAPING THE FUTURE TOGETHER: POWER TO CREATE, FOR ALL

Envision a future of limitless creativity, driven by technology that provides innovative design tools. Advancements like AI and smart devices empower individuals to shape their environments.



Subject Matter Expert (SME) Corner

The **Subject Matter Expert (SME)** Corner is SkillUp's dedicated space for learners to gain insights directly from industry professionals who bring years of expertise and hands-on knowledge. This platform features expert-written articles, practical guidance, industry trends, and career-focused insights that help students and professionals stay updated and future-ready.

Through the SME Corner, learners get access to valuable thought leadership, real-world problem-solving approaches, and best practices shared by experienced specialists across various domains. Whether it's technology, business, innovation, or career development, each contribution empowers readers with clarity, depth, and actionable understanding.

The SME Corner transforms expert wisdom into accessible learning—helping individuals strengthen their skills, broaden their perspective, and grow with confidence.





UNFILTERED **INSIGHTS**

LET THE
IDEAS FLOW
FREELY

GENERATIVE AI SEARCH (SGE): THE FUTURE OF SEO IN THE AGE OF INTELLIGENT SEARCH

Google's Search Generative Experience (SGE) is changing how people search by providing AI-generated answers directly on the search page, often reducing the need to click on websites. This shift affects SEO by lowering CTR, prioritizing user intent over traditional keywords, and introducing a new goal of being cited within AI-generated responses. To stay visible, creators must use structured data, build strong authority, optimize for natural, conversational queries, and produce clear, comprehensive content that AI can easily understand and summarize. Overall, SEO is moving from simply ranking pages to earning trust and visibility within AI-generated search answers.



CASE STUDY

GENERATIVE AI SEARCH (SGE): THE FUTURE OF SEO IN THE AGE OF INTELLIGENT SEARCH

Challenge: Outdoor gear retailer Apex Trekking saw a 40% drop in traffic from informational SEO content because Google's SGE (Generative AI Search) answered user questions directly, leading to "Zero-Click" results.

Old Strategy (Pre-SGE): Compete for high-volume keywords with basic "Top 10" lists. Result: High traffic, but low conversion rate (1.2%).

New Strategy: Optimizing for "Information Gain"

Apex shifted focus from simple facts (which AI handles) to Originality and Expertise (E-E-A-T):

Experience Upgrade: Replaced generic facts with first-hand testing and unique photos/data (e.g., "Guide Sarah wore these boots for 50 miles in the rain").

Complex Intent: Focused on high-stakes, nuanced queries that AI struggles with (e.g., "4-season tent comparison for high-altitude survival").

Digital PR: Increased brand mentions on authoritative third-party sites to get products featured in SGE's product carousels.

CLOUDFLARE OUTAGE DISRUPTS INTERNET SERVICES: WHAT HAPPENED AND HOW IT AFFECTED USERS

*S Yaswanth,
MSConnect Point sol*

Cloudflare, one of the world's largest content delivery networks (CDN) and internet security providers, recently experienced a significant outage that disrupted services for millions of users globally. The issues began when users reported problems accessing websites powered by Cloudflare, with many encountering error messages like "502 Bad Gateway" or "503 Service Unavailable." Other sites faced slow loading times or partial content failure.

Cloudflare quickly acknowledged the problem and identified the cause as a technical issue within its network, potentially linked to DNS operations, edge server behavior, or a configuration error. This issue led to widespread connectivity problems for websites and applications dependent on Cloudflare's infrastructure. Over the course of the outage, Cloudflare provided regular updates on its status page, assuring users that its engineers were working to resolve the issue. The recovery was gradual, with some regions seeing faster resolution than others.

Users and administrators from making urgent updates to their services.

REINFORCEMENT LEARNING: TRIAL, ERROR AND REGRET OF MACHINE LEARNING

*Sreeraj Patnaik D, Student
Vice-Chair, ACM SC LIET*

Reinforcement Learning (RL) is basically the part of AI where we stop spoon-feeding machines and let them stumble around like toddlers! except these toddlers eventually learn to beat world champions at Go. Instead of giving explicit instructions, we drop an agent into an environment, hand it some rewards, and say, "Good luck, champ. The agent starts exploring, sometimes brilliantly, sometimes disastrously. Each action earns a reward or a penalty.

Over time, the agent figures out which actions bring long-term happiness (maximum cumulative reward), which is basically what humans try to do too, except humans also have social media distractions and midnight snacks. The secret sauce in RL is the trade-off between exploration and exploitation.

Should the agent try something new, or stick to what already works?

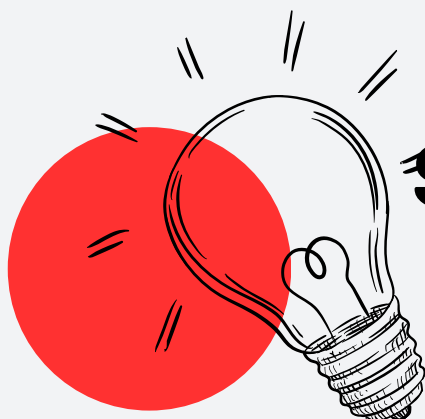
It's the same question we ask before ordering food: experiment with Momos or just get biryani again? Under the hood, RL uses clever methods like Q-learning, where the agent builds a map of how good each action is, or policy gradients, where it directly learns the best strategy. These ideas have powered breakthroughs in robotics, self-driving cars, recommendation engines, and game-playing AI that can out-play, out-think, and out-strategize humans.

ADAPTIVE HASHING IN DATABASE ENGINES

*Sreeraj Patnaik D, Student
Vice-Chair, ACM SC LIET*

Adaptive Hashing in Database Engines Adaptive hashing is a dynamic optimization technique used in database storage engines to improve lookup performance without restructuring the entire indexing system. Traditional hash structures assume uniform key access and distribution, but real workloads frequently create hotspots. When certain keys or pages are accessed disproportionately, a fixed hashing strategy causes repeated collisions, longer probe chains, and slower lookups. Adaptive hashing addresses this by selectively building faster lookup paths for hot regions.

In engines such as InnoDB, access statistics are continuously monitored. When the frequency of access to a specific data page crosses a predefined threshold, a secondary hash structure is generated for that page. This auxiliary structure bypasses tree traversal and redirects lookups through a direct hash mapping. Subsequent access to the same key requires only a hash computation, reducing the complexity from logarithmic tree search to constant-time retrieval. Let M represent total indexed items and H denote the subset repeatedly accessed. Without adaptation, average lookup time remains proportional to $O(\log M)$ when using B-tree search paths. After adaptive hashing activates, lookup for H behaves as $O(1)$ expected time, while all other items retain their existing access paths.



SPARK OF *an Idea*

Share Your Idea → Review It
Publish It → Share it → Published



Campus Connect

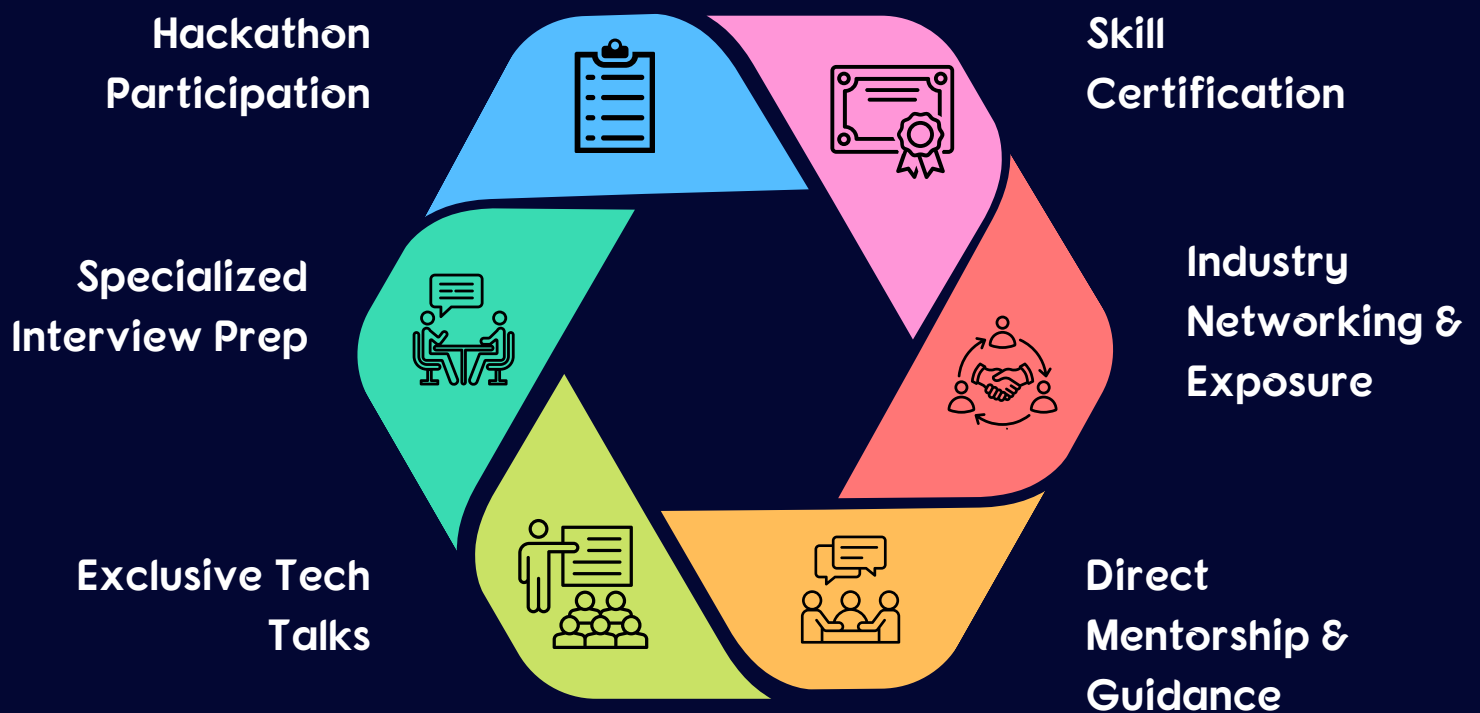
Campus Connect is SkillUp's student engagement hub designed to bridge learners with the right opportunities, communities, and career-building activities. It brings together students from various colleges, offering them a platform to collaborate, learn, share ideas, and explore growth pathways that strengthen their academic and professional journey.

Through **Campus Connect**, students gain access to events, workshops, competitions, internship updates, and community interactions that help them stay informed and actively involved. The platform fosters a vibrant network where learners can participate in meaningful activities, enhance their skills, and stay connected with industry trends.

Campus Connect empowers students to step beyond the classroom—creating an environment where learning meets collaboration, and collaboration leads to new opportunities.



Beyond the Classroom



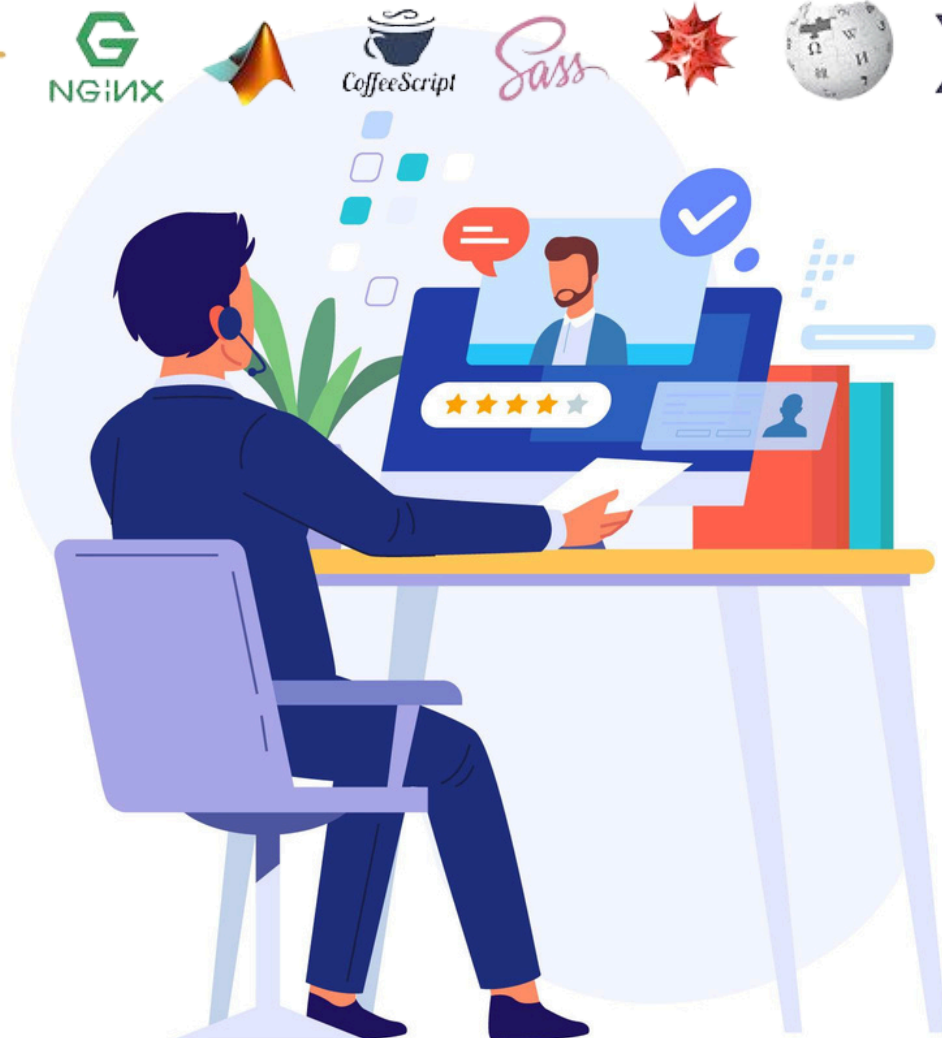
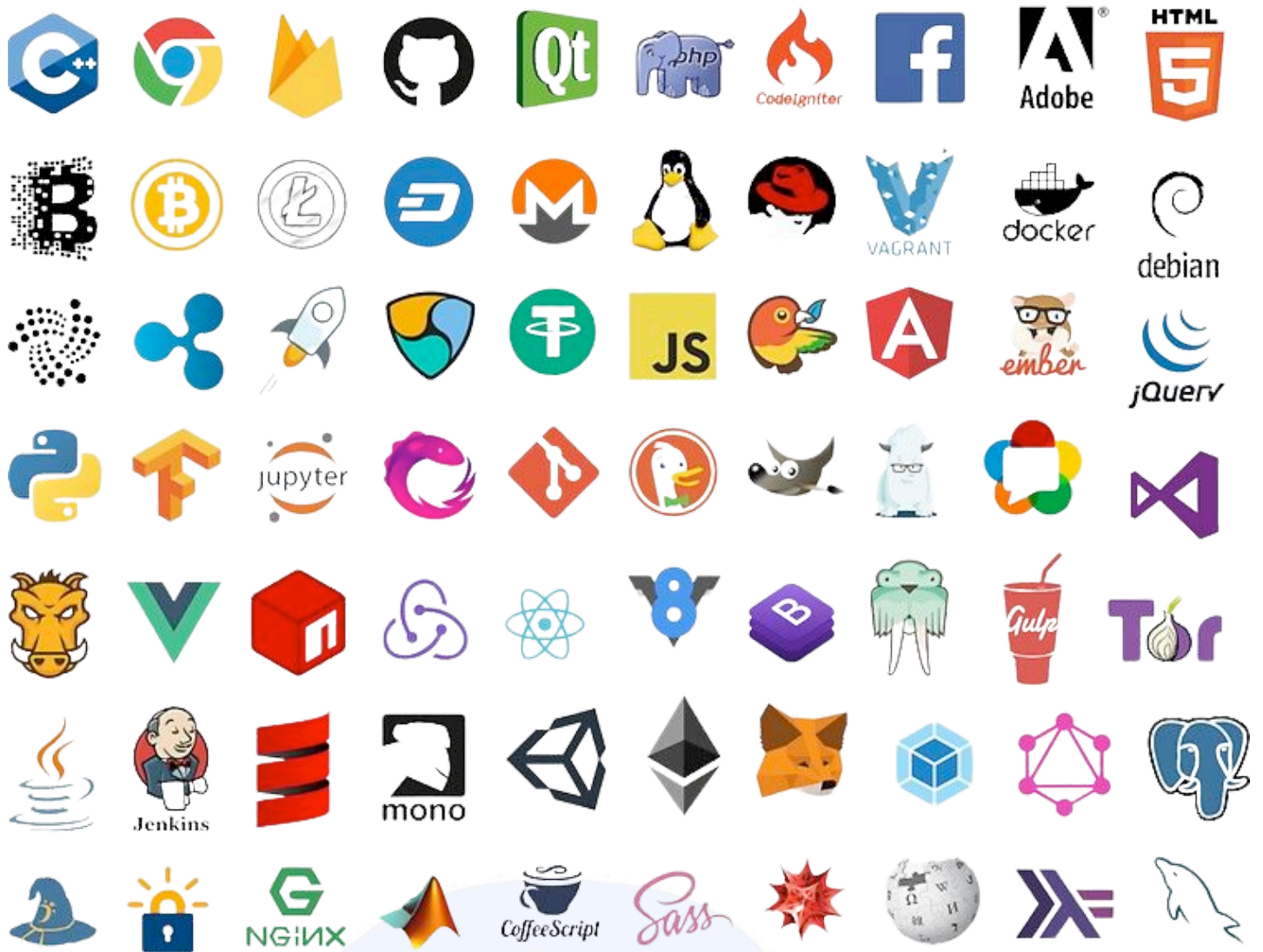
Interview Prep

The Interview Preparation module is SkillUp's dedicated training space for boosting students' confidence and readiness for job interviews. It offers structured guidance, curated question banks, and preparation strategies tailored for both technical and HR rounds.

SkillUp aims to make this one of the largest interview readiness resources, targeting 1,00,000 interview preparation questions by February 2026. Students can practice across multiple domains, explore real interview patterns, and build the competence needed to succeed in competitive hiring processes.

All students connected through Campus Connect will also receive access to this Interview Preparation platform, enabling them to prepare effectively while staying engaged with the SkillUp community.





DevFusion Hackathon



DevFusion Hackathon is SkillUp's flagship innovation arena where creativity, problem-solving, and technology come together. It provides students and young professionals with a high-energy platform to build real-world solutions, collaborate with peers, and demonstrate their technical capabilities.

Participants work on exciting challenges across coding, design, AI, automation, cybersecurity, and more—transforming ideas into functional prototypes within a competitive timeframe. **DevFusion** encourages teamwork, rapid thinking, and hands-on experimentation, helping learners strengthen both technical and analytical skills.

The hackathon also serves as a gateway to industry visibility, mentorship, and recognition. With project showcases, evaluation by experts, and potential opportunities for internships or collaborations, **DevFusion** becomes more than just a competition—it becomes a launchpad for real innovation.

DevFusion Hackathon empowers students to think beyond boundaries and bring impactful ideas to life.





DEV FUSION

hackathon



Master the Skills the Industry Needs

In today's fast-changing world, industry demands go far beyond textbook knowledge. Employers and global markets—are looking for candidates who bring practical skills, adaptability, and real-world readiness. Recent trends show that along with technical knowledge, soft skills, adaptability, teamwork, problem-solving, and the ability to apply knowledge in real scenarios are becoming top priorities.

- Acquire industry-relevant knowledge that aligns with what employers actually seek
- Gain hands-on experience through projects and internships — putting theory into practice
- Develop both technical and soft skills to stand out in competitive job markets
- Build a digital portfolio or resume-ready profile through course work, projects, and writing — not just grades
- Connect with industry experts and mentors who guide you beyond textbooks

Whether you're fresh out of college, preparing for placements, or looking to up-skill for better opportunities — SkillUp courses give you a real advantage: they help you become not just job-ready, but future-ready.

Join SkillUp — master the skills the industry needs, and step confidently into your career.



Full Stack Development



Data Science & ML



AI & Deep Learning



Cloud Computing (AWS)



DevOps & Containers



Python Programming



Core Java & Spring



JavaScript & React



SQL & Database Design



Digital Marketing



Blockchain Technology



Cybersecurity



Software Testing (QA)



Mobile App Development



Advanced Excel

You're Early — Be Part of the Beginning

This newsletter is just getting started. We're building an open learning community where ideas, skills, and collaboration come together — and early voices matter the most.

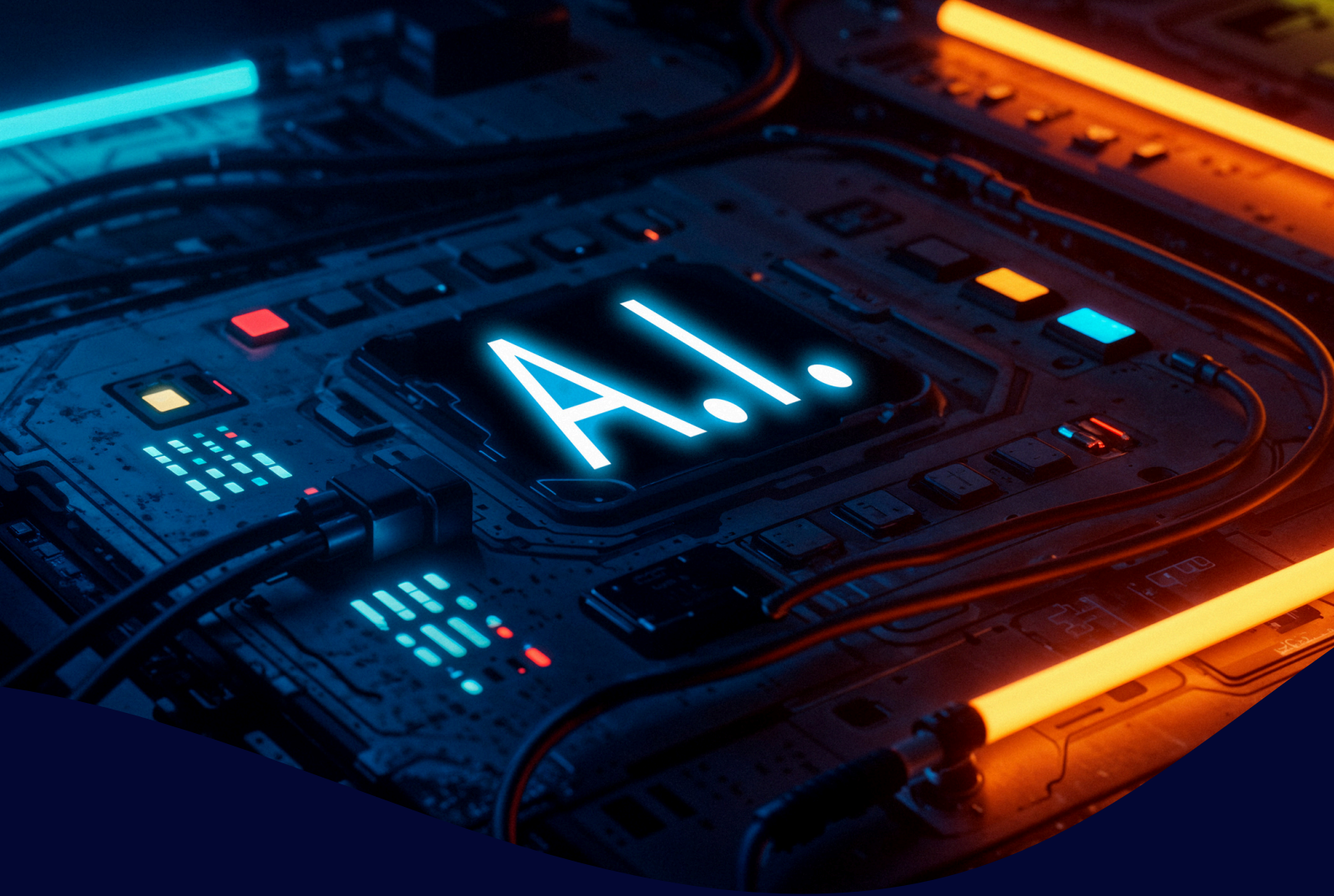
How You Can Participate

- 💡 Share ideas and perspectives
- ✍️ Contribute short articles or insights
- 📖 Suggest topics you want to learn about
- 📢 Spread the word with like-minded learners



Be part of the Foundation
Help shape what this
community becomes.





Connect **Faster**, Achieve **More**.

Don't just keep up—power ahead with SkillUp.
Inspired by the revolutionary speed of AI, SkillUp delivers
the intelligent tools you need to streamline your work,
nurture every relationship, and maximize growth.



Smart Scheduling
& Reminders



Automated Email &
Chat Replies



Personalized User
Experiences

For More Information



+91-9666090061



skillup.thepixelleads.com



@skillup.thepixelleads